

Oving and District News

Colworth Drayton Merston Oving Shopwyke

Summer 2021





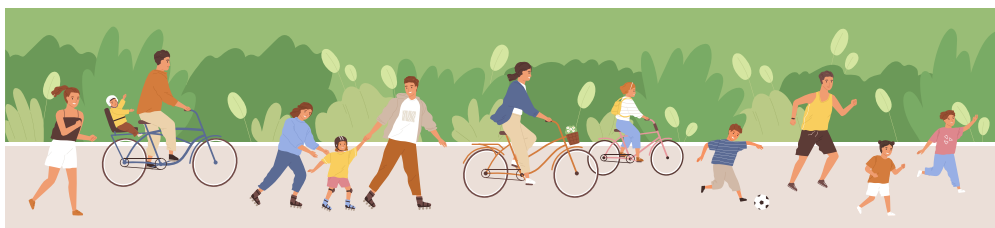
A fresh approach to legal services.
We hope you like it.



FREE initial appointment
on most legal matters

Whatever legal assistance you
require we will advise and
guide you with a practical and
supportive service.

Conveyancing
Commercial matters
Wills
Probate
Powers of Attorney
Divorce and Family matters
Employment
Contractual disputes



Call our friendly team on
01243 850860

15 Southgate, Chichester, PO19 1ES
Unit D1, Chichester Marina, Chichester, PO20 7EJ
chichester@jcsolicitors.com www.jcsolicitors.com



Editors Note

The front cover shows an old photo of the lovely clear view , over the Gribble Inn , all the way to the Chichester Cathedral spire across green fields . If are we to keep this depends on your active involvement in the Neighbourhood planning process. Such is the importance of this topic, the Parish Council has asked we devote several pages to ensuring you are kept up to speed with all the recent developments ,so please read on. These updates replace Rod Hagues regular Parish Council up date .We are also asked to urge you to log onto www.ovingcommunity.org.uk for information, including all Parish meeting minutes.. Navigation of the site is a bit difficult but I am told that improvements will be on the way.

I did not think, almost two years on , we would be caveating everything due to COVID . Sadly this edition is still light in content, many events normally planned for summer months, like Scarecrow day, are still in limbo and few , understandably, wish to put to pen to paper and commit to plans ahead.

During these lean times quite a number of our advertisers have continued to support us for which we are very thankful. Many businesses have suffered but I believe it is in all our best interests to support those around us , not least the local pub, the Gribble, to ensure a thriving local economy.

May the sun continue to shine and hang on in there, we can see light at the end of the tunnel !!

COOK WITH ALEX

Cookery Classes in Tangmere -
will be back as soon as we are allowed to!!

* Begin with the **BASICS** * Students off to **UNI**

* D of E * **Men** in the kitchen * **Fabulous Fish***
Mediterranean Light Bites* Veg or **VEGAN** *

Chocolate Delights * Bread *

& many more topics to choose from.....

Enquire now for future dates – half-day or one-day courses with food writer

Alex Barker; Hands-on cooking and recipes to take away

www.cookwithalex.co.uk

A woman with grey hair, wearing a maroon sweater, is smiling in a kitchen. She is standing behind a counter with a sink, a kettle, and some books. The text 'YOU'RE ALREADY A CAREGiver, you just don't know it yet.' is overlaid on the left side of the image.

YOU'RE
ALREADY
A CAREGiver,
*you just don't
know it yet.*

inspected and rated

Outstanding 



Care Quality
Commission

At Home Instead Senior Care, caring is our passion and it all starts with our CAREGivers.

People like you, who love to help others, make excellent CAREGivers for Home Instead Senior Care. Turn your passion for caring into a rewarding role and join the Home Instead Senior Care team. You will have our full support, excellent training and enjoy competitive rates of pay.

Make new friends and give your skills a new sense of purpose.



**Home
Instead.**

It's us. It's personal.



Turn your
passion into
a career.



Visit www.homeinstead.co.uk/chichester
or call 01243 468690 to learn more.

Each Home Instead Senior Care franchise office is independently owned and operated. Copyright © Home Instead 2021.



Most of us are lucky enough to take good health for granted, and so when the need arises for us or one of our relatives to accept support, it's often a big, unexpected, and unwelcome surprise. So what questions should you ask when considering care in your own home?

How do I know if the staff will be any good?

1) Good care providers are selective about their staff, and make every effort to support them in their work and listen to their concerns. When researching a care provider look them up on Google and Facebook and see what their own staff have to say about them. No reviews isn't a good sign.

2) Do a local search on the Care Quality Commission (CQC) website www.cqc.org.uk Ratings in England are either Outstanding, Good, Requires Improvement, or Inadequate. CQC reports are very detailed and will give a good indication of how the service is run and what they found in their inspection.

3) Speak to social workers, health professionals and community representatives to understand what they recommend. Don't be afraid to ask questions to the provider about how they work. The time taken to discuss and plan your care should be sufficient to make it personal.



Terence, 92, enjoying a stroll in the garden with his CAREGiver Steve, who has helped him remain independent in his own home for the last 3 years



From Simon Oakley WSCC /CDC

Councillor

On 31 March CDC's Planning Cttee approved the Outline Planning Application (20/02893/OUT) for the 1300 dwelling Tangmere Strategic Development, after over a decade of various planning activity. If the associated processes complete as intended, the first houses could be occupied in 2023 with build out taking over a decade.



As with the Shopwyke Lakes development, large sites take a long time to plan and build. However, they have the advantage of being large enough to directly obtain significant infrastructure which would not be possible from a succession of small sites (e.g. the Redrow and former Portfield Quarry sites at Shopwyke). CDC's Local Plan Review is heading towards proposing an allocation of upwards of 900 dwellings on the AL3 site at Shopwyke, with a further 300 around Drayton Lane. **A key aspect of such a scale of development is getting the Local and Neighbourhood Planning Policies in place (as at Tangmere) to get the best balance between providing the housing, obtaining the right infrastructure and delivering environmental protection/mitigation.**

A major challenge, given long development lead times, is predicting the transport environment. Though there is a lot of ambition for sustainable forms of transport, the freedom and flexibility of road transport (however it is powered) means it is going to remain the predominant means of movement in our mixed urban/rural area. Given the overall scale of proposed development in Southern Chichester and Western Arun Districts, this is going to be the key infrastructure challenge, considerably complicated by the A27's Trunk Road status.

Simon Oakley

8th June 2021.



What residents think - feedback from on-line survey

Fifty-three residents responded to our draft Vision and Objectives. We are grateful for the many considered opinions and thoughtful comments. This a synopsis of their thinking. It will be used to inform our planning policies that are now being drafted.

There is overwhelming concern about future development that could endanger the separate identity and semi rural character of the parish.

The more than doubling of the population resulting from the Shopwyke Lakes and coming new estates south of Shopwyke Road raise fear of Oving becoming a suburb of Chichester. The prospect of a further 1300 or so dwellings on adjoining sites, to meet as yet no known need, only exacerbates that fear.

If there has to be new development and some would be welcomed over the next 15 years, it should be 'well considered, thought through' and do nothing to increase urbanisation. Approval should be subject to the following conditions:

First, the necessary infrastructure put in place in advance, consisting of:

- A road network of high quality tarmac to reduce noise that can cope with the increased volume of traffic including heavy vehicles. The parish's country lanes are unsuitable.
- Foot and cycle path networks, including paved stretches, that link the parish to Chichester and adjoining settlements, and provide connectivity within the parish itself.
- An improved bus service to cut car usage for travel to Chichester, Barnham and Arundel and to access local services including retail, school and health.
- A local farm shop (the business case has still to be examined)

Secondly, it should protect wildlife corridors and include substantial tree planting and hedges to promote biodiversity and carbon capture.

Thirdly, infill and new estates should be designed, using design codes as necessary, to be sympathetic to the 'look and feel' of the parish, including its historic buildings, and blend with its historic landscape.

Fourthly, affordable housing, rented, owned or partly owned, should be provided 'proportionate to the size of the parish' within new developments or on exception sites, to meet the needs of local residents and others with local connections.

The unique and historic quality of the parish owes much to its setting of open fields, trees and well managed farms. Residents are insistent that no development should be permitted on prime farm land. Specifically this includes land east of Drayton Lane.

As one respondent said, 'It is irreversible. Once it is gone, it is gone.'

Stephen Quigley

Chairman Oving Neighbourhood Plan Steering Group June 11, 2021



This is to let you know how we are getting on with this project.

The first action was to get the local authority, **Chichester District Council**, to designate the geographic area for the plan. This it did in early March. The area will take in the whole parish. This being agreed, the preparation of the plan now has formal status and is eligible for CDC's official support.

The next action was to draft a vision and objectives and consult residents. This has now been done. We have engaged with residents via the website, ODN, leafleting, notice boards and advertising in the Chichester Observer. The response has been useful. You have told us what you like about living in the parish, what you don't like, what you want protected, and what your concerns are for the future. We have summarised your response on the website.

We are now in the pre submission stage. This is where the going gets harder. We are drafting the policies that make up the substance of the plan. Policy themes will be linked to the objectives, namely Housing, Employment and Enterprise, Environment and Heritage, Leisure and Community, and Getting about. This is a skilled task. For this we shall be hiring planning consultants to turn our ideas into planning conditions including design codes that will give developers clear guidance on what will be acceptable to us. Policies are not wish lists. They have to be based on firm evidence and unambiguous in their meaning.

Once these policies have been drafted and the evidence base assembled we will be in a position to prepare the plan that goes out to a six-week consultation of residents, landowners, developers, and statutory consultees, such as **West Sussex County Council, Natural England, Environment Agency.**

The way we deal with representations is a fundamental part of the approval process. Each has to be logged. And we have to record how we respond and give reasons if we decide not to take a recommendation on board. **A neighbourhood plan has to be community led and seen to be.**

We aim to start the consultation mid to late autumn. We shall write again nearer the time to explain what communications methods we shall use. One might be via one or more open days at suitable venues at which we would set out the policies for creating our vision for the parish and can get your reaction. At that time we shall also explain what further work has to be done before we put the document to a referendum and arrive at a 'made' plan.

You can join us on the road by looking at the notes of our monthly meetings on the parish website. (www.ovingcommunity.org.uk)

Stephen Quigley



Inter-County Nursing & Care Services

Supporting people to stay safely at home



Inter-County prides itself in providing professional, high quality care in the local community. Whether you need help with shopping once a week or daily support with personal care, Inter-County can accommodate your needs and provide you with the support you need to stay living in your own home!

Quality Care at Home



| | |
|---------------------|---------------------|
| *Daily Visits | *Night Duties |
| *Medication Support | *Meal Preparation |
| *Domestic Support | *Companionship |
| *Respite Care | *Home from hospital |

Tel: 01243 528777

W: www.inter-county.co.uk

E: info@inter-county.co.uk

ASTONS

Personal Training Studio & Gym

**First 30 Days
ONLY £9.99**

NO sign up fee

NO contracts

FREE PT Session (Worth £30)

Refer a friend and receive another
month FREE * (Worth £39.99)

Bio age and inbody tests to see
your fitness levels

Personalised workout plan

24/7 access to the gym

FREE Outdoor Classes

Discount off high street brands

Small and quiet atmosphere to train

www.astonsgym.co.uk

01243 531165

train@astonsgym.co.uk

Unit 2, Temple Bar Business Park,

Strettington Ln, Chichester

PO18 0TU

A Different Way to Train

A few words about Astons new gym close to the Parish

At Astons we have the latest state of the art eGYM resistant equipment, this equipment is personalised to you and sets personalised workouts and adjusts to your position. All the machines link to our Astons App which monitors your progress to give you your biological age and also where your strengths and weaknesses lie.

We have a 2 free-weights area that has barbell, dumbbells and kettlebells. Our team are always here for FREE tutorial classes to teach you how to use this equipment safely and get the best out of your workout. A dedicated area for stretching, TRX and light weights, this new space is quiet, bright and relaxing, so you can focus on stretching and working on a new exercises.

You can track your progress and results through our Astons App that is available on the Apple and Google Play stores. We are running monthly challenges on our app where you can WIN FREE memberships, gift cards and FREE PT Sessions! This app also links to your smart watch and other training aids, all your fitness needs are at your finger tips.

Who remembers the mushroom farm (and the smell)



Computer & IT Support



A word cloud on a black background with various IT services listed in different sizes and colors (white, blue, yellow). The central and largest word is 'Support'. Other prominent words include 'Repairs', 'Home', 'Business', 'Networks', 'Software', 'Want to Learn More?', 'Solve a Problem', 'Remote Support', 'Education', 'Buying or Upgrading', 'Hardware', 'Wi-Fi', 'Indoors', 'Vehicles', 'Boats', 'Large Screens', 'Office 365', 'Cabling', 'Design', 'Computers', 'Data Recovery', 'MS Teams', 'Events', 'Tablets', 'Friendly', 'Broadband', 'Projection', 'Apple', 'Wi-Fi', 'Education', 'Son-et-Lumiere'. In the top right corner, there is an icon of a monitor and a smartphone. In the bottom left corner, there is an icon of two people, one standing and one sitting at a desk with a computer.

MARCOM Computing

Tel: 01243 787478 Mob: 07796987155

Email: 25years@marcomdef.co.uk

CHARTERED BUILDING SURVEYORS

**SLOANE
&
BROWN**

ARCHITECTURAL SERVICES

Architecture & Building Surveying
Planning & Listed building applications
Pre-acquisition surveys
Party wall surveyors

**Rural • Urban • Coastal
Historic • Contemporary**

Call Kevin or Phil on 01243 774764
3B Woodhorn Business Centre, Oving
enquiries@sloaneandbrown.co.uk
www.sloaneandbrown.co.uk



Is this true?

A monkey was found at Cambuslang train station near Glasgow .

This prompted an appeal from Scotrail. “ if you’ve lost your monkey its waiting for the next service from Cambuslang into Glasgow”

The monkey was eventually reunited with its owners but not before enjoying a tin of fruit.

“ I canny believe he had a tin opener with him” added Scotrail !!!

FILM REVIEW by ANNIE BENNETT

THE MAURITANIAN directed by Kevin MacDonald.

(Amazon Prime Video)

Adapted from his own memoir, "Guantanamo Diary", this is the true story of Mohamedou Ould Slahi, the eponymous subject of this intensely disturbing and moving film.

Living in Germany, he returns to Mauritania in 2001 for a family wedding, whereupon he is arrested by the local police and transferred to American custody and Guantanamo Bay in 2002. His crime? Receiving 1 text on his phone from his cousin using Osama bin Laden's satellite phone and allowing a friend of a friend a bed for the night in Berlin without knowing he was on an American watch list. The nightmare begins.

The film unfolds as a narrative moving backwards and forwards in time. Initially the interrogations are patient and repetitive, but it becomes quite obvious that the Americans believe he has information that he is intentionally withholding. Even though he is being held without charge and in the most basic of conditions, he remains remarkably polite and hopeful for his early release, as he keeps telling them, he has had no involvement with 9/11 or Al Qaeda.

Slahi is played by the French/Algerian actor, Tahar Rahim (he played the lead in the excellent BBC drama "The Serpent") superbly low key, yet exhibiting growing signs of mental anguish as his detention continues.

He is assigned a Lawyer, played by a superb Jodie Foster, who must travel on a 3-hour flight to Cuba every time she wishes to consult with him. At first, she neither cares whether he is guilty or not, only that having invoked Habeas Corpus, the American government must charge him. Thus begins the extraordinary central theme of this film, as she attempts to gain access to his files. At first all are redacted. Years go by, and then amazingly signed copies of his confessions to all the crimes he is accused of are released. His lawyer thinks his case is proved. Why would he confess to something he didn't do??

It is at this point the narrative circles back to an earlier time in his incarceration, and reveals the answer and the most appalling torture he is subject to.

. It is not for the faint hearted. It continues for months... waterboarding, stress positioning, loud heavy metal music played day and night, mock executions, sexual abuse.... you name it, they do it. Then he signs the confessions. Jodie Foster's face as she reads this is a masterclass in non-verbal acting (Yes, they kept detailed reports on all his torture!).

After 8 years in Guantanamo, his case is finally brought to trial and he is found not guilty of any crime. It will take a further 6 years until he is released. 14 years inside for no crime.

All the cast are excellent, although Benedict Cumberbatch as a prosecuting lawyer for the Americans, adopts a very strange Southern drawl and really has a somewhat non part.

But the plaudits must go to the Mauritanian himself.....who we see at the end in news reel of his home coming.... now married to an American and Father to a son....and as we speak, battling the American authorities to allow them to live as a family in the US.

Woodburner Showrooms Ltd

Stoves of the future available today

Eco Design Ready Stoves On Display

Fireplace Renovation Specialist

Hetas Qualified Management & Installers

Fire Surrounds/ Free Surveys/ Logs & Fuel

Locally Sourced Handmade Fireplace Accessories



Chichesters Official Big Green Egg Dealership



Tel: 01243 512700

www.woodburnershowrooms.co.uk

email: info@woodburnershowrooms.co.uk

Woodburner Showrooms Ltd

Main Road

Birdham

Chichester



THE OVING CLINIC



A centre of excellence for fast accurate diagnosis and effective treatment of all types of sports injuries back problems and other physical conditions

Sports and Exercise Medicine

Musculoskeletal Medicine

Physiotherapy and Osteopathy

THE OVING CLINIC

Open 9am - 6pm (Late night Tuesdays)
The Oving Clinic, Church Lane, Oving
West Sussex. PO20 2DG

Tel: 01243 773167 - www.ovingclinic.co.uk

DOWN ON THE FARM

The coldest and driest April on record followed last year's drought, which itself was the most extreme in all my years of farming. Extremes in weather really do seem to be the trend now and it inevitably forces us to ask many challenging questions which start (and almost end) with 'how do we produce food without water?'



It has now rained and doesn't look like stopping any time soon! So is this just normal 'British weather' or are we looking at genuine changes in weather patterns? I think the latter and without debating the causes, we must adapt because the answer to my question is: 'you *can't* produce food without water'!

All the land in Oving parish sits over chalk that acts as a natural underground aquifer. Fissures in the chalk store winter rainfall water that can be extracted in the spring/summer via boreholes. However, as the population increases in the region and more houses are built every year, the competition for this finite water resource increases. Naturally, the demand from the water companies take precedent over the needs of farming and the Environment agency will not allow farms to sink new bore holes. At the same time, a combination of climate change and demand from the water companies is already reducing water levels in our stream and rivers with serious knock on effects to these important wildlife habitats.

However, we have plenty of water in the winter (winters seems to be getting wetter annually so no concerns there!) when of course we don't need it. The solution is to capture the winter rainfall and store it in reservoirs for spring/summer use. This is what we are looking at now, but the cost is extremely high. The reality is that the total value of an acre of wheat or barley is less than the cost of storing water, let alone applying it and paying the Environment Agency a fee for the privilege of being allowed to do it in the first place. High value intensive crops such as vegetables can absorb this cost but not traditional arable crops or grassland.

This poses some interesting questions, including whether we will see a significant change in what is grown in our region's fields? Vineyards are already popping up everywhere and salad and vegetables are already widely grown. But the latter crops need to be part of a long term rotation with the likes of wheat or grass to prevent disease and maintain soil health. How will we achieve this without water? (Off topic but extremely relevant, is the question of who is going to pick the veg?). Organically, we also need to maintain our dairy herd to create fertility and enable a balanced environmentally sound rotation. No water means no grass and again, irrigation is prohibitively expensive.

So we have some challenges ahead but somewhere in the mix is an opportunity that we will find and embrace. Perhaps the holy grail is being able to enjoy a summer BBQ whilst knowing that our crops aren't going thirsty -if that's not a challenge worth taking up, I don't know what is!

All our spring crops have now been sown and the last of these, maize, is just poking out the ground. We have a few more weeks before the rooks and crows will leave it alone. The cows have been out at grass since early March but are only now getting to enjoy some warmth and sun on their backs. This is important as our cows are extremely soft and pampered. So whilst some of their brethren in Scotland and Cumbria would find the coldest day in Oving a delight, the bovine residents at Reeds Farm would happily take a flight to Spain for some extra sun whether they had to quarantine on their return or not!

John Pitts



Please come and visit our fabulous family run nursery and preschool for children aged 3months to 5 years.

Our children experience an exciting, challenging, creative curriculum which is tailored to each child. Enabling them to thrive and flourish.

An Early Years teacher leads the pre-school and over sees the nursery. Ensuring a high standard of education is delivered to all children.

Delicious home cooked meals with healthy snacks and organic milk served daily.

We have a peripatetic dance teacher that comes in weekly and we are delighted to offer a very popular weekly Forest school session.

Free entitlement places available and childcare vouchers accepted.

**Open Mon-Thurs 7.30am-6pm Fri 7.30am-5pm
51 weeks of the year excluding Bank Holidays.
Woodpecker Nursery, Tangmere Road, Chichester, PO202EU.**

**Please call on 01243 839905 to book a viewing
to visit our unique nursery**



THE GRIBBLE

INN & BREWERY

FREE HOUSE

GREAT FOOD GREAT ALES GREAT LOCAL

We look forward to seeing you soon

Gribble Lane, Oving, West Sussex PO20 2BP
01243 786893 for Bookings & Brewery Enquiries
e mail: hello@gribbleinn.co.uk
www.gribbleinn.co.uk



THE GRIBBLE



St Wilfrid's Hospice

Making a difference to local lives

Moonlight Walk 2021!

Early bird tickets end 30 June, There are two options this year:

The evening event walking through Chichester via a 5 or 10-mile route which includes the specially lit Bishops Palace Gardens on 11th September.

The virtual event, where you can do a 5,000 or a 10,000 step walk in a time or place special to you and share your story with us on Facebook @stwilfridschichester between 4th - 11th September

This year more than ever, every penny counts towards delivering compassionate end of life care in our community. Register at stwh.co.uk/moonlightwalk for early bird tickets!



Three new volunteering roles!

Like to upcycle clothes? Could you help collect shop donations as part of our van crew? Or perhaps you can help the return of the physical Moonlight Walk event this year?

Make new friends, learn new skills, build a cv and get creative in a safe environment making a difference to your local community.



We offer a wide and varied range of roles where no experience is needed but full training and support will be given in a Covid-secure environment. Start something rewarding with a chat with Emma on 01243 755185 or by emailing volunteers.office@Stwh.co.uk

We have always felt passionately that St Wilfrid's Hospice is a successful charity because of our people, volunteers and staff alike. Throughout the pandemic we have seen incredible adaptability and flexibility from all of our volunteers in so many ways. It has been so amazing to see how many of the volunteer roles have been able to continue, from the volunteers supporting the ward team and patients, the community support team, hospice visitors, gardeners, shop volunteers and so many others. Volunteers will continue to play a vital role in this, as the past year has proved to us beyond doubt how vital our volunteers are to our ongoing success and for the care we give to local people who need us.



Thank you all, for everything you do.

Alison Moorey, Chief Executive & Soline Jerram, Chair of Trustees

Get together...In your Garden

Raise your glasses, raise some smiles and raise some funds for your local Hospice with a get together in your garden. Download the Get together pack for a wealth of ideas to get your fun filled fundraiser off to a sizzle. Available at stwh.co.uk/gettogether



Summer raffle

Prizes include £1,000 cash, a stay at Bailiffscourt Hotel and Spa, Lazy Susan's bistro set of garden furniture, floristry, artisan gin, summer planters, hampers and more!

Still just £1 per ticket with a closing date of 12 July 2021 and drawn on 16 July.



Sahara Trek 2022

An invitation to adventure on a trek that summits the top of the highest sand dunes in the Sahara - The Chigaga Dunes. The whole trip is 6 days long and you will trek and camp under the stars for 4 of those days through an ever-changing landscape.

Register at stwhco.uk/saharatrek for our next virtual Information evening on **23rd June at 7pm**



Want to feel more confident than you have ever felt before?

This 4th July take on a sponsored 10,000ft free fall tandem skydive for St Wilfrid's Hospice and raise vital funds as part of our Leap 4 Love team! All training is provided on the day and everything is managed by your own experienced instructor, allowing you to take in every second. Register online at stwh.co.uk/leap4love



Soaring 100m above Portsmouth Harbour and taller than Big Ben, the Emirates Spinnaker Tower awaits the brave. Join #teamwilf on **Sunday 18th July** with a flexi date guarantee on all our events

. stwh.co.uk/abseil



MOBILE VALETING SERVICES

‘WE COME TO YOU’

Family Cars - 4x4's - Prestige Vehicles – Boats – Aircraft – Caravans
Motor Homes – Horse Boxes - Road Cycles
Pathways and Patio cleaning too

Family business - Over 25 years' experience
We can do just a wash and hoover or removal of scratches to a
showroom standard valet



Mobile: 07786 130459

Email: vikingvaleting@gmail.com Find us on Facebook

Crime in Progress, Accident or Emergency:

Call: **999**(Free)

Suspicious Behaviour or Criminal Information

Call: **101** (cost 15p)

Crime Stoppers (Free & Anonymous)

Call: **0800 555 111** (Free)

Community Support Officer

Call: **0101 ext 22325**

Police website (Free) **www.sussexpolice.uk** (click on contact us)

Police email (Free) **contactcentre@sussex.pnn.police.uk**
(you will receive a reference number in reply message)

General Information

For crime prevention tips and details of your
Area and Street Coordinators,
see the Parish website **www.ovingcommunity.org.uk**



Peat-Free & Sustainable Gardening Products



AVAILABLE IN
BULK BAGS & LOOSE



COMPOST



TOPSOIL



MULCH



BARK



DELIVERED DIRECT
TO YOUR HOME



EARTHCYCLE.CO.UK

01243 781730

THE WOODHORN GARDEN

Organic Fruit and Veg Boxes



Delivered from £10.50.

**Contact us for your
delivery day - extras
including organic eggs and
local Honey.**

Choose your own organic
produce at our farm gate sales
on Fridays, 9.00 to 4.00pm
Wayside, Church Lane,
Oving PO20 2BT.

info@waysideorganics.co.uk
www.waysideorganics.co.uk

Find us on Facebook,
Instagram and Twitter



Optimum eye care takes time, all appointments are 40 minutes or more, carried out by our Optician and proprietor Mr Iain Thompson.

We pride ourselves on providing exceptional eyecare, fabulous frames, expert guidance & a warm welcome!



- Private & NHS Appointments • Advanced OCT Scanning
- NHS GOS 3 Voucher accepted • Children's Eye Tests
- Contact Lens Service • Colour Screening
- Complete frames & lens packages from £59.00

BOOK
ONLINE



T: 01243 940 180 | E: info@northopticians.co.uk
www.northopticians.co.uk

60 North Street | Chichester | West Sussex | PO19 1NB

We welcome Private and NHS patients





Ambush

Pest Control Ltd



If you have a problem with Pests let us put your mind at rest

We are located in the Oving Village next to the Gribble pub!
Your local professional pest control service providing

Residential Pest Control & Commercial Pest Control

Solutions for

Rats • Mice • Wasps • Fleas • Ants • Bird control
• Moles and much more!

Fully insured, established over 15 years, BPCA accredited, discreet service

**Local residents in the Oving Village
Parish, receive 10% discount**

For all your pest control requirements

Please call us on:

Tel: 01243 276141

Mob: 07740 949570

Email: info@ambushpestcontrol.co.uk



www.ambushpestcontrol.co.uk

Fly Tipping

The question is , who dumped here ????

This picture, taken on Church Lane , at the entrance to the footpath to the old airfield was sent in to me by an un-named source. One can only hope that the wc was placed there by someone wanting to draw attention to the terrible scourge of fly tippers , they certainly achieved their objective !!!!



If you are an Avid reader of the Oving news, I am sure you will realise that dealing with the problem of Fly Tipping plays a major role in what we do. It can happen anywhere and be made up of anything, if you think of a random item; we have probably seen it dumped somewhere. We have seen everything from building materials, the remnants of drug cultivation and even a full conservatory!

Each time we deal with a fly tip, we see what evidence we can find to try and identify the source of the rubbish, this could be letters with address on or invoices etc. Once we have this evidence we pass it on to Environmental Health and they seek to prosecute the culprits. In a lot of cases it will be a home owner who needs some rubbish removed, they pay someone who offers the service, but what they don't know is that the contractor is going to dump the rubbish to save money. If you employ someone to remove waste from your home or business they must have a Waste Carriers Licence, if they do not you are also liable for prosecution. You can check any company by looking the up via this link. <https://environment.data.gov.uk/public-register/view/search-waste-carriers-brokers> Always check before you employ someone to remove your waste, if the price seems too good to be true, it probably is!

If you see anything suspicious then let us know, these people usually operate late at night when no one is about but occasionally they are seen. A registration number or a description of the person or vehicle could be the last piece of the puzzle. But, please never put yourself in danger by approaching to get a better look, they will all slip up eventually.

If you do have any information or you come across a Fly Tip, please contact us via phone, Facebook or email . Community Wardens



NEWS FROM YOUR VILLAGE HALL

Summer is here and the Oving Jubilee Hall is open for business. We have been very busy during the last few months and, with financial support from Oving Parish Council, have made a lot of improvements. There is a fantastic new ('disco standard') speaker and lighting system, a large (4M x 3M) drop down screen and new floors throughout. We have also upgraded all our other lighting, installed a new boiler and equipped our meeting room with a TV screen and full connectivity.

During the lockdown, in February, we had a Zoom quiz with over 20 families, raising £175 for the Hall. It was touching that several parishioners who couldn't join the quiz donated money towards the Hall. Thanks again to those people; you know who you are. The quiz was punctuated by plenty of banter as well as the provision of answers to most of the questions. Father Trevor, the quiz master, kept us all on track and ensured fair play. The winners were Sue and Richard Barnett, part of the Pilates group.

Katie, our bookings secretary, has been busy keeping everyone up to date about the implications of the Government roadmap and our caretakers, Nick and Doug, have been extremely flexible, turning their hands to lots of extra jobs to help save money, at a time when our income from bookings was almost zero. Their help has been greatly appreciated.

In May I took over as Chair of the Hall Management Committee from Eileen Saunders and I'd like to say a **big thank you** to her. Eileen took this voluntary job in December 2014 and devoted a great deal of her time to the Hall. She was instrumental in improving the fabric of the Hall and putting it on a sound financial footing. This involved a lot of work and I have very big shoes to fill. I am very pleased that Eileen is staying on the Management Committee.

As the new Chair, I want to know what you would like to see at the Hall. Film nights, music events, lectures, coffee mornings? Maybe you have something specific in mind? Please let me know - email: annemariédutchy@gmail.com. And, if you are planning a party or event, don't forget, Oving parishioners receive at least 20% off the Hall booking fee.

Looking ahead, we have arranged 3 things for everyone to enjoy (more info to follow):

Quiz Night – Saturday 9th October

Christmas Fayre – Saturday 4th December (stalls are for hire for £5, contact me if interested)

Race Night – Saturday 12th February 2022

Anne-Marie Eastwood annemariédutchy@gmail.com 07810 128245

Bookings: Katie 07962 932560 hall@ovingjubileehall.org.uk

Caretakers: Nick/Doug 07875 491031 ovinghall.caretaker@gmail.com

Regular Weekly Groups as at June 2021 (depending on Government regulations)

| Day | Time | Activity | Contact |
|------------------|-----------------------|----------------------------------|-----------------------|
| Sunday ++ | 10.00 - Noon | Raventor Re-enactment Group | |
| | 17.00-21.00 | Chichester Evangelical Community | |
| Monday | 9.30 – 12.30 | Art Group (from Sept) | Barbara 01243 266193 |
| | 9.45-11.45 | South Coast Sports (April-Sept) | |
| | 11.45 – 17.30 | Dog Training | Veronica 01243 827550 |
| | 18.15 – 19.30 | Boogie Bounce | |
| Tuesday | 09.00 – 12.00 | Food Pantry (Chat and Chill) | |
| | 14.00 – 16.30 | Oving Indoor Bowls | |
| | 17.15 – 21.00 | Dog Training | Veronica 01243 827550 |
| Wednesday | 10.30 – 11.30 | Pilates | Rachel 07973 632412 |
| | Afternoon | AVAILABLE FOR HIRE | |
| | 18.30 – 21.00 | Youth Club | Gareth 07768 202356 |
| Thursday **** | 14.00 – 16.00 | Village Tea party | |
| | 18.00 – 21.00 | Smart Cheer Group | Ben 07955 607304 |
| Friday | 10.15 – 11.15 | Pilates | Rachel 07973 632412 |
| | Afternoon/ evening | AVAILABLE FOR HIRE | |

++ Raventor meet on Sunday mornings during the winter months only

***The Parish Tea parties take place once a month on a Thursday but we can work any other Thursday bookings round this community event



Your Local & Trusted Vets

Madam Green Business Centre, High Street, Oving, PO20 2DD

Tel: 01243 779111

www.chichester-vets.co.uk

From our Community Wardens, Gareth and Dawn

It has been so nice to see so many people out and about again, the Pub is open and normality is returning. Youth club has made a welcome return to the village hall along with all the other regular users. The community garden is up and running, they meet on the 1st Saturday of the month at 9.30 and everyone is welcome.

Recently Oving has been benefitting from the hard work of a young man called Toby Sellors. Toby has been working through lockdown, litter picking around the village for his Duke of Edinburgh's Award. Toby has collected an amazing amount of litter and is on course for his Bronze award. Well done Toby.



Electric Scooters are becoming more common on the roads and pavements around Oving. They are fun and very convenient, but unfortunately they are also illegal. There has been a lot of confusion surrounding them, this is mainly because in some areas they have been made legal for use in a pilot scheme, but in these cases they are hired to the user. I have added the latest rules regarding their use below. Parents please note that if your children are out using them, they may be stopped by Police who can issue a fine up to £300

Gareth and Dawn



We are busy here on the farm all year round, during the winter we spend most of the time preparing the ground for the new plants, ensuring the polytunnels are ready, whilst inside in the glasshouse, that the temperature is steady and the conditions are just right to grow the very best berries.

We are always looking for great people to join our team, both in seasonal and permanent roles. If you know of anyone looking for a new opportunity in farming, please do ask them to get in touch by emailing recruitment@summerberry.co.uk





AGRICULTURAL PROJECTS
COMMERCIAL
INDUSTRIAL
HOME

FABRICATION & WELDING
STRUCTURAL STEEL
BLACKSMITHS
MACHINING



UNIT 9, WOODHORN BUSINESS CENTRE, Oving

E: sales@mjengineeringsussex.com

W: www.mjengineeringsussex.com

T: 01243 527400



Chichester Computer
Support Services

COMPUTER PROBLEMS?

IT Support Services

Chichester Based

PC Software/Hardware
Internet & Email Configuration
Wireless Connectivity Issues
Printers/Home Networks

Home Visits across the area
Fast, Reliable, Friendly Service

01243 811434/0796870083
chichestercomputerservices.co.uk



Chandler Stoneworks Ltd

Granite, Marble & Quartz specialists



- Based in Sussex, we fabricate bespoke kitchen worktops using our state-of-the-art machinery and highly-skilled stonemasons
- Family run with over 12 years' product and industry experience
- Granite, marble, quartz composite, Dekton, Neolith and slate products available
- Full templating and fitting service with continuity of on-site personnel
- 7-10 day turnaround from template to fit
- Tailor-made to individual requirements from fire hearths and bath surrounds to bespoke kitchen worktops
- Cleaning care-kits and maintenance products
- Guild of Master Craftsmen member
- We cover the South of England and London areas
- We welcome customers to our showroom where we can assist and advise on the different product ranges available

Units 42 & 34B The Vinery, Arundel Road, Poling, Arundel, West Sussex, BN18 9PY
t 01903 885941 e sales@chandlerstoneworks.co.uk w chandlerstoneworks.co.uk

This is your church!

One of joys of the Church of England is that we have a parish system. Anyone who lives in the parish has St Andrew's as their parish church. This means that you can be baptised, married or have a funeral at the ancient church building that has stood at the heart of our community for hundreds of years. The church has been there for over 800 years and we intend to be here for many years to come.

But in order to keep the church at the heart of the community, we need to make sure that it is kept in good condition. St Andrew's is a listed building, so we have an obligation to maintain the building in such a way as to make it available to everyone who wants to come and visit, for those who want to come and pray and for those who want to celebrate a baptism or wedding.



Keeping the building in good condition costs money. Unfortunately, we do not receive any money from the Church of England, so have to rely on donations from those who use the church or those who appreciate having the church as part of the village. The cost of maintenance and running costs for 2020 was in excess of £8,000. We are blessed with people who undertake fundraising activities to help cover these costs, but we are relying on a relatively small number of people to make this happen.

If you feel that you can help support us in keeping this ancient building open and maintained to it's current high standard, please contact me through our church website (www.ovingchurch.co.uk) and we will send you details on how to do this.

May God bless you and all that you care for.

Revd Trevor Marshall

The New Testament in 60 Days

A group of us are planning on reading the New Testament in 60 days. The pattern of reading is supported by three presentations at strategic points along the way.

Understanding the Gospels
St. Paul and his Battles
Concerns of the Churches

These three presentations cover some of the major themes of the relevant sections of the New Testament. If you are interested in joining us, please contact us via the website.



A bit ^{happy} but an old photo showing the setting of Oving Village surrounded by fields. The glasshouses at Tangmere airfield are just in sight top right.



THE MARTIN SEWELL BUILDING COMPANY

A family business that has worked in the Sussex area since 1985, gaining a well-deserved reputation for professionalism, top quality craftsmanship and project management skills. Experienced in all types of building, from modest additions to modern properties and grand extensions to period properties through to new-build projects.

Hungerdown, Brittens Lane, Fontwell, Arundel, West Sussex BN18 0ST

Telephone 01243 542056 Email martin@msbc.uk.com

www.msbc.uk.com



USEFUL LOCAL CONTACT DETAILS

Parish Councillors

Chair

Rod Hague

01243 789282 / 07990 522693

rodhague@hotmail.com

Vice Chair

Stephen Quigley

01243 530500 / 07976 298681

Squidcom1@googlemail.com

Councillors

Vacancy for Shopwyke resident

Chichester District Councillor

Chris Page

01243 380009

cpage@chichester.gov.uk

Oving Community Wardens

Dawn White

07768 210358

dwhite@chichester.gov.uk

Gareth Jones

07768 202356

gjones@chichester.gov.uk

Neighbourhood Watch

Vacant

Mandy Wright

01243 533115 / 07702 785801

mandy@justmandy.co.uk

Duncan Marston

07548 633829 / 07548 633829

dunkmarston@yahoo.co.uk

Victor Davey

07963 641507

Cllr.Davey@ovingcommunity.org.uk

Alison Turnbull

07729 348095

Cllr.Turnbull@ovingcommunity.org.uk

Clerk & RFO

Ruth Palmer

01243 268270 / 07770 742041

Clerk@ovingcommunity.org.uk

West Sussex County Councillor

Simon Oakley

03302 224535

Simon.oakley@westsussex.gov.uk

Oving Parish Community Watch

Vacant

Youth Club Chairman

Gareth Jones

07768 202356

gjones@chichester.gov.uk

Jubilee Hall

Katie Holmes

07962 932560

hall@ovingjubileehall.org.uk

ODN Editor

Colin Buchanan

01243 839204

opn.buchanan@outlook.com

ODN Advertising and Finance

Paul O'Shea

01243 536679

paul.oshea@hotmail.co.uk

ODN Content collation

Ralph Godfrey

01243 528053 / 07722133728

godfrey.ralph@orange.fr

GEORGE IDE LLP solicitors

Offices in Chichester, Guildford and London



Your leading law firm for:

- **Wills & Probate**
- **Commercial Property & Business Services**
- **Family & Divorce**
- **Personal Injury & Clinical Negligence**
- **Residential Property**
- **Wealth Management**

Serving the community for over 50 years

T: 01243 786 668 • E: info@georgeide.co.uk
www.georgeide.co.uk